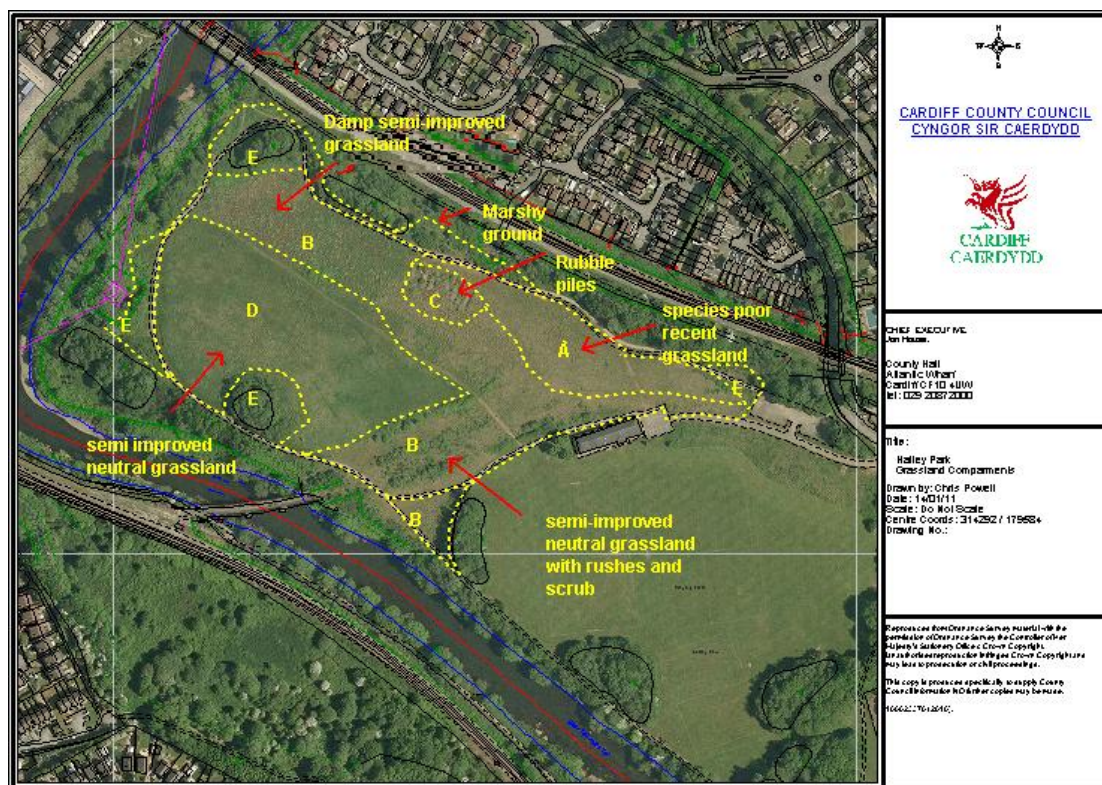


Hailey Park Meadow – Management Plan



Area A is a recently seeded sward with a relatively low species diversity, dominated by Common Bent, Perennial Rye-grass, Crested Dog's-tail, Yorkshire Fog and White Clover.

Area B is a patchy mix of semi-improved grassland, with scattered scrub and a variable sward height; frequent species here include Yorkshire Fog, Common Bent, Rough Meadow-grass and Hairy Sedge. It is locally quite damp, and includes local areas with Hard Rush, Reed Canary-grass and plants typical of damp meadows, such as Greater Bird's-foot Trefoil, Fleabane and Ragged Robin. Most of the plant species are very common, but together they form a botanically diverse and flower-rich grassland.

Area C includes several piles of tipped rubble that are sparsely vegetated by common ruderal plants. Their varied range of slopes and aspects is likely to provide suitable basking habitat for invertebrates and reptiles such as grass snakes and slow worms.

Area D is a relatively uniform sward of semi-improved grassland with sparsely scattered scrub. It appears less flower-rich than Area B, with a slightly denser sward, apparently including a higher proportion of coarse grasses such as Tall Fescue and Cock's-foot.

The perimeter habitats, grouped together as Area E are a varied mix of scrub, grassland and tall herbs vegetation. Most of the areas of taller trees appear to be the result of landscape planting. A damp scrape beside the northern boundary holds

water during the winter only. Broad-leaved Helleborine orchids are present in several of the scrub margins. Japanese Knotweed and Indian Balsam occur in a few patches.

The site evidently supports a good range of fauna, and the flower-rich areas are likely to be locally valuable for invertebrates. Slow Worms and grass snakes are present throughout the site in good numbers.

Management Objectives

The area is managed for amenity and biodiversity by Cardiff County Council and the Friends of Hailey Park. Management activities include scrub clearance and grass cutting and raking. Area A and B is subject to scrub clearance during the autumn and winter by the Friends group. This helps maintain the grassland habitat. Two sections within Area D are mown every autumn to increase biodiversity. The cut grass is raked up by the Friends group and placed into hibernacular piles for reptiles.

The grass at the northern section of Area D is left long to provide an overwintering area for butterfly larvae and eggs. The buddleia and willow scrub on Area C are coppiced annually to provide good basking areas for reptiles.

Areas E at the periphery are thinned every five years. This work involves chainsaws and is carried out by the Council Rangers.

A good surfaced path encompasses the meadow. The path is maintained by the Friends group. This involves cutting back vegetation and repairing any damage to the surface.

A programme of biological recording takes place on the site. The Friends work alongside the Council to check and maintain bird boxes and dormice boxes. Casual biological recording takes place frequently. Butterfly transects and reptile recording (checking basking areas) takes place frequently during the Summer.

A series of guided walks take place throughout the year. These include walks such as 'Go Batty in Hailey Park', 'History and Folklore of Trees' and 'Blooms and Butterflies,' to name a few. These walks are led in partnership with Friends and Council Rangers. For Blooms and Butterflies walk, local group Cardiff Naturalists also assist with the event.

Hailey Park Meadow - Photographs



Area A. Looking West.



Area B. Looking North over Southern Part.



Area C. Looking east across sparsely vegetated rubble piles.



Area D. Looking south-east.



Area E at north-eastern boundary, showing typical mix of scrub, tall grasses and herbs at the site perimeter.

Hailey Park Meadow – Species List.

Each plant species seen within the survey area is listed. The approximate abundance of each is indicated by the DAFOR scale (D = Dominant, A = Abundant, F = Frequent, O = Occasional and R = Rare).

In the table, Area A represents the recently sown grassland in the east of the site, Area B the central area of damp semi-improved grassland, Area C the sparsely vegetated rubble piles, Area D the semi-improved grassland in the west of the site, and Area E the scrub / grassland margins at the site perimeter.

Species	Common Name	A	B	C	D	E
TREES AND SHRUBS						
<i>Acer capestre</i>	Field Maple					F
<i>Aesculus hippocastanum</i>	Horse Chestnut				R	
<i>Alnus glutinosa</i>	Alder					R
<i>Alnus incana</i>	Grey Alder					R
<i>Betula pendula</i>	Silver Birch					O
<i>Buddleja davidii</i>	Butterfly Bush		R	F		F
<i>Clematis vitalba</i>	Old Man's Beard					R
<i>Corylus avellana</i>	Hazel			O		O
<i>Cotoneaster</i> sp.	Cotoneaster					R
<i>Craetagus monogyna</i>	Hawthorn			R	R	O
<i>Cystis scoparius</i>	Broom			O		
<i>Fraxinus excelsior</i>	Ash		R			O
<i>Hedera helix</i>	Ivy					O
<i>Ilex aquifolium</i>	Holly					R
<i>Populus alba</i>	White Poplar					F
<i>Populus tremula</i>	Aspen					F
<i>Prunus avium</i>	Wild Cherry					O
<i>Quercus robur</i>	Pendunculate Oak				O	O
<i>Rosa canina</i>	Dog Rose		R	R		R
<i>Rubus fruticosus</i> agg.	Bramble	R	R	F		F
<i>Salix alba</i>	White Willow	R				R
<i>Salix caprea</i>	Goat Willow	R			R	O
<i>Salix fragilis</i>	Crack Willow				R	O
<i>Salix viminalis</i>	Osier					R
<i>Ulex europaeus</i>	Gorse		R	R		R
<i>Vitis vinifera</i>	Grape-vine			R		R
HERBS						
<i>Achillea millefolium</i>	Yarrow		R	R		
<i>Artemisia vulgaris</i>	Mugwort		O			O
<i>Calystegia sepium</i>	Hedge Bindweed		O	R		F
<i>Centaurea nigra</i>	Common Knapweed		O	R	R	
<i>Centranthus ruber</i>	Red Valerian		R			R
<i>Cerastium fontanum</i>	Common Mouse-ear		R			O
<i>Chamerion angustifolium</i>	Rose-Bay Willowherb		O	R		
<i>Cirsium arvense</i>	Creeping Thistle		O	O		F
<i>Convolvulus arvensis</i>	Field Bindweed			R		
<i>Crepis capillaris</i>	Smooth Hawk's-beard					R
<i>Daucus carota</i>	Wild Carrot					R
<i>Epilobium hirsutum</i>	Greater Willowherb		O			O
<i>Epilobium montanum</i>	Broad-leaved Willowherb			O		R
<i>Epilobium parviflorum</i>	Hoary Willowherb		R	R		R
<i>Epilobium tetragonum</i>	Square-stalked Willowherb		R	O		R
<i>Epipactis helleborine</i>	Broad-leaved Helleborine					O
<i>Eupatorium cannabinum</i>	Hemp Agrimony		R	R		O
<i>Fallopia japonica</i>	Japanese Knotweed			R		F
<i>Galium aparine</i>	Cleavers			O		F
<i>Geranium dissectum</i>	Cut-leaved Crane's-bill		R			F
<i>Geranium robertianum</i>	Herb Robert		O	R		
<i>Geum urbatum</i>	Wood Avens		R			
<i>Heracleum sphondylium</i>	Hogweed					F

Species	Common Name	A	B	C	D	E
Hirschfeldia incana	Hoary Mustard			R		
Hypericum maculatum	Imperforate St. John's-wort		O			O
Impatiens glandulifera	Indian Balsam					R
Lathyrus pratensis	Meadow Vetchling	R	O	F	O	O
Leucanthemum vulgare	Ox-eye Daisy			R		
Linaria purpurea	Purple Toadflax		R			
Linaria vulgaris	Toadflax		O			O
Lotus corniculatus	Lesser Bird's-foot Trefoil	R	O	O	R	F
Lotus pendunculatus	Greater Bird's-foot Trefoil		F		F	O
Lychnis flos-cuculi	Ragged Robin	R	O			
Medicago lupulina	Black Medick		R	A		O
Melilotus cf altissimus	Tall Medick		O			
Odontites vernus	Red Bartsia		R	R	R	O
Oenothera sp.	Evening Primrose		R	R		
Pastinaca sativa	Wild Parsnip			R		O
Persicaria amphibian	Amphibious Bistort		O		F	O
Picris echioides	Bristly Ox-tongue	R		R		
Plantago lanceolata	Ribwort Plantain	F	F	O	O	O
Plantago major	Greater Plantain				R	O
Potentilla anserine	Silverweed	O	A	F		F
Potentilla reptans	Creeping Cinquefoil	R	O	O		O
Prunella vulgaris	Self-Heal		O			O
Pulicaria dysenterica	Fleabane	R	F		F	
Ranunculus acris	Meadow Buttercup	R	R		R	O
Ranunculus repens	Creeping Buttercup		R		R	O
Rumex acetolla	Sheep's Sorrel			R		
Rumex conglomeratus	Clustered Dock		R			R
Rumex crispus	Curled Dock	O	O	O		O
Rumex obtusifolius	Broad-Leaved Dock	O	R	O		O
Scrophularia nodosa	Common figwort			R		
Senecio jacobea	Ragwort		O	R		O
Solanum dulcamara	Woody Nightshade			R		R
Stachys palustris	March Woundwort		F	R	R	O
Stachys sylvatica	Hedge Woundwort			R		O
Stellaria graminea	Lesser Stitchwort				O	
Symphytum x uplandicum	Russian Comfrey					R
Teraxacum sp.	Dandelion	O	R	R	O	F
Trifolium dubium	Lesser Trefoil	R	R			
Trifolium medium	Zigzag Clover	O				
Trifolium pratense	Red Clover	O	D		R	
Trifolium repens	White Clover	A	O	F		
Tussilago farfara	Colt's Foot			R		
Urtica dioica	Nettle			R		O
Verbena officinalis	Vervain					R
Veronica chamaedrys	Germander Speedwell			O		R
Vicia cracca	Tufted Vetch		R			O
Vicia hirsute	Hairy Tare		R			
Vicia sativa	Common Vetch	R	O	F	R	
Vicia tetrasperma	Smooth Tare		R			R
GRASSES, SEDGES AND RUSHES						
Agrostis capillaries	Common Bent	D	O	O	A	F
Agrostis stolonifera	Creeping Bent	O	F	O		R
Alopecurus pratensis	Meadow Foxtail		O		R	O
Anthoxanthum odoratum	Sweet Vernal-grass	O	O		F	O
Arrhenatherum elatius	False Oat-grass					F
Carex divulsa	Grey Sedge		O		R	
Carex flacca	Glaucous Sedge		O			
Carex hirta	Hairy Sedge	O	A	O	A	
Carex otrubae	False Fox-sedge		O	R	R	O
Carex ovalis	Oval Sedge		O	O		
Carex pendula	Pendulous Sedge		O			
Carex remota	Remote Sedge		R			

Species	Common Name	A	B	C	D	E
Carex spicata	Spiked Sedge		R			
Cynosurus cristatus	Crested Dog's-tail	F	F	R	R	O
Dactylis glomerata	Cocks-foot Grass	R	R		F	
Deschampsia cespitosa	Tufted Hair-grass	O	O		R	
Elytrigia repens	Couch				O	O
Festuca arundinacea	Tall Fescue		R		R	
Festuca pratensis	Meadow Fescue				R	
Festuca rubra	Red Fescue	O	O			F
Holcus lanatus	Yorkshire Fog	F	F	A	A	F
Holcus mollis	Creeping Soft-grass		R			O
Juncus bufonius	Toad Rush					R
Juncus effusus	Soft Rush		O	O		O
Juncus inflexus	Hard Rush	O	A	F		A
Juncus tenuis	Slender Rush		R			
Lolium perenne	Perennial Rye-grass	F	O	O	O	O
Phalaris arundinacea	Reed Canary-Grass		F		R	O
Phleum pratense	Timothy	R				
Poa annua	Annual Meadow-grass		R		R	
Poa pratensis	Smooth Meadow-grass					O
Poa trivialis	Rough Meadow-grass		F	O		A
FERNS						
Equisetum arvense	Field Horsetail		A	O		
Equisetum telmateia	Giant Horsetail		R			
Pteridium aquilinum	Bracken					O
BRYOPHYTES						
Brachythecium rutabulum	Moss		O			O
Calliergonella cuspidate	Moss		A			
Cratoneuron filicinum	Moss		F	O		
Kindbergia praelonga	Moss		O			
INCIDENTAL FAUNA OBSERVATIONS						
INVERTEBRATES						
Aphantopus hyperantus	Ringlet Butterfly	√	√			√
Autographa gamma	Silver Y Moth		√		√	
Cynthia cardui	Painted Lady Butterfly		√			
Euclidia glyphica	Burnet Companion Moth		√			
Maniola jurtina	Meadow Brown Butterfly	√	√		√	√
Ochlodes venata	Large Skipper Butterfly	√	√		√	√
Pararge aegeria	Speckled Wood Butterfly	√	√			√
Pieris brassicae	Large White Butterfly					√
Polyommatus icarus	Common Blue Butterfly					√
Zygaena sp.	Burnet Moth		√		√	√
Pholidoptera griseoptera	Dark Bush-cricket					√
Conocephalus discolor	Long-winged Conehead		√		√	
REPTILES						
Anguis fragilis	Slow Worm		√		√	
Natrix natrix	Grass Snake					√
BIRDS						
Columba livia	Feral Pigeon	√	√			√
Columba palumbus	Wood Pigeon					√
Erithacus rubecula	Robin					√
Passer domesticus	House Sparrow	√	√			√
Phylloscopus collybita	Chiffchaff					√
Pica pica	Magpie					√
Picus viridis	Green Woodpecker					√
Turdus merula	Blackbird					√
Turdus philomelos	Song Thrush					√
MAMMALS						
Oryctolagus cuniculus	Rabbit					√
Vulpes vulpes	Fox		√			